



# Roller Design Manual

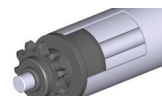
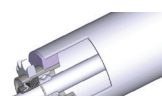


**STARKLINE**





## TABLE OF CONTENTS

TYPE 0X		Roller wheel, Wheel track			
	Roller diameter D; (mm)	Bearing	Load capacity max. (F; N)	Conveyor speed max. (v; m/s)	Page
	15; 22; 28; 40; 48; 60; 80	Various	100	0,5	5 - 13
TYPE 1X		Light conveyor roller (Plastic ball bearing)			
	Roller diameter D; (mm)	Bearing	Load capacity max. (F; N)	Conveyor speed max. (v; m/s)	Page
	16; 20; 30; 40; 50; 60; 63	Plastic with steel balls	200	0,3	15 - 23
TYPE 2X		Universal conveyor roller (Plastic house)			
	Roller diameter D; (mm)	Bearing	Load capacity max. (F; N)	Conveyor speed max. (v; m/s)	Page
	16; 20; 30; 40; 50; 60; 63	Plastic house with ball bearing	1600	2,0	25- 35
TYPE 3X		Universal conveyor roller (Steel house)			
	Roller diameter D; (mm)	Bearing	Load capacity max. (F; N)	Conveyor speed max. (v; m/s)	Page
	12;30; 40; 48; 50; 60; 80	Steel house with ball bearing	2400	0,8	37- 45
TYPE 4X		Heavy duty conveyor roller (Steel house)			
	Roller diameter D; (mm)	Bearing	Load capacity max. (F; N)	Conveyor speed max. (v; m/s)	Page
	60; 63; 70; 76; 80; 89; 108; 133; 159	Steel house with ball bearing (welded)	2400	0,8	47 - 57
TYPE 5X		Driven roller medium duty			
	Roller diameter D; (mm)	Bearing	Load capacity max. (F; N)	Conveyor speed max. (v; m/s)	Page
	50; 60	Plastic drive element, T2X bearings	1500	1,5	59 - 71
TYPE 6X		Driven roller heavy duty			
	Roller diameter D; (mm)	Bearing	Load capacity max. (F; N)	Conveyor speed max. (v; m/s)	Page
	30; 40; 50; 60; 63,5; 70; 80; 89; 108	Metal drive element, T3X or T4X bearings	6000	1,5	73 - 79

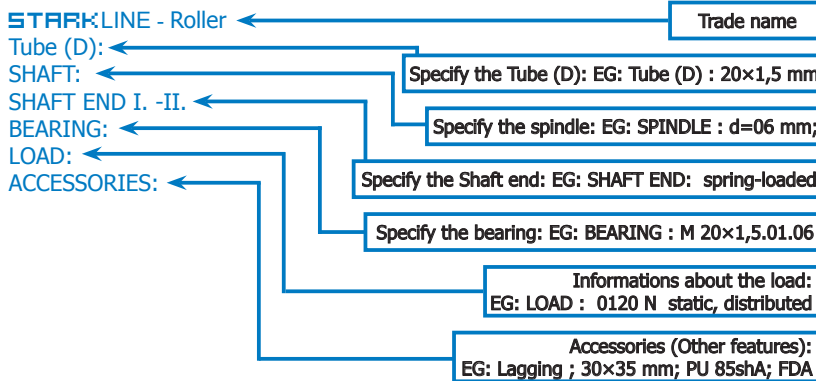
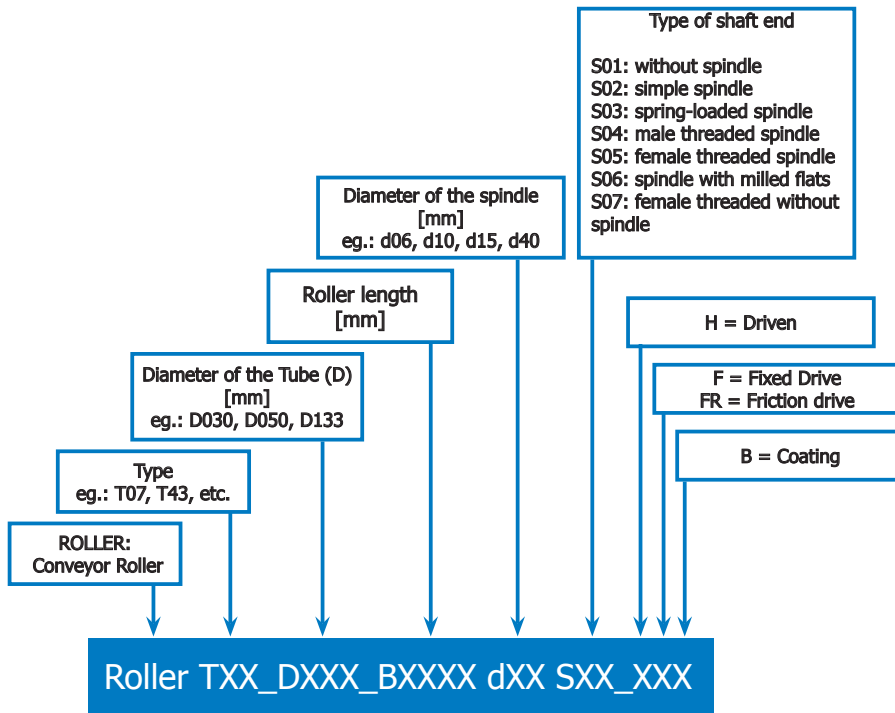
### ATTENTION!

The load capacity of a conveyor rollers is depends on many of parameters. It's not just simply two times the load capacity of the bearing. (It depends on the material and thickness of the Tube (D), the diameter, etc. )





## SUBTITLE



Remark:

You can choose any combinations of the parts, materials you find in this catalog. In this case please contact with us.

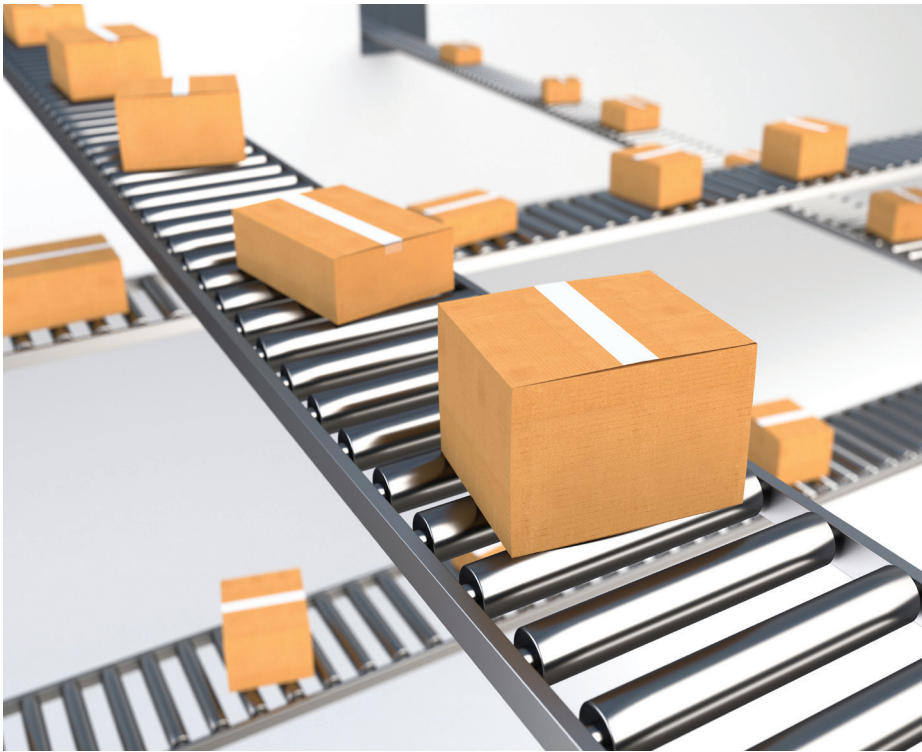






## ROLLER WHEEL, WHEEL TRACK

TYPE 0X



# STARKLINE

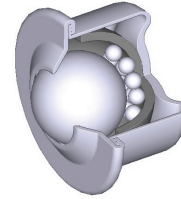
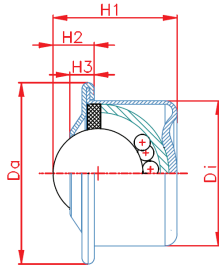
5





## TYPE 01

D=15; 22 mm



Ball					
	D (mm)	Steel	Surface process	Stai-less steel	Plastic
	15,0 mm	-	S	-	-
	22,0 mm	-	S	O	-
	15,1 mm	-	S	-	-
	22,1 mm	-	S	O	-

Size					
Type	Da	Di	H1	H2	H3
015 L	31,0	24,0	21,0	9,5	5,5
022 L	45,0	36,0	30,5	10,0	6,0
015	31,0	24,0	21,0	9,5	5,5
022	45,0	36,0	30,5	10,0	6,0

Bearing			
Type	Load (F; N)	Type	Load (F; N)
015 L	500	015	1200
022 L	1200	022	3500

Use
<ul style="list-style-type: none"> <li>- Conveyance in any direction possible</li> <li>- Housing made of steel ( Surface process or stainless steel available )</li> <li>- Simple design</li> <li>- Smooth-running balls</li> <li>- Protection against dust and splashes of water</li> <li>- Temperature range: -30° - 100°</li> </ul>

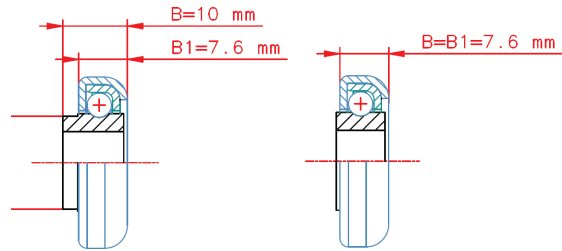
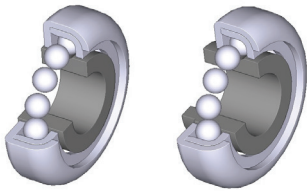
S- Standard; O- Orderable






## TYPE 02

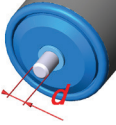
D=28 mm



### Tube (D)

	D (mm)	Steel	Surface process	Stainless steel	Plastic
	28 mm	-	S	-	-

### Spindle ( d )

	d ( mm )	Steel	Surface process	Stainless steel	Without spindle
	10 mm	O	O	O	S
	12 mm	O	O	O	S
	12,8 mm	O	O	O	S

### Bearing

	Type		Type
	F 28.15		FM 28.15
	Fmax= 100 N		Fmax= 70 N
			Plastic inner ring

### Use

- Universal element can be used for many applications
- Housing made of steel ( Surface processed )
- Simple design
- Smooth-running ball bearing
- Temperature range: 0° - 80°

S- Standard; O- Orderable

# STARKLINE

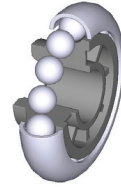
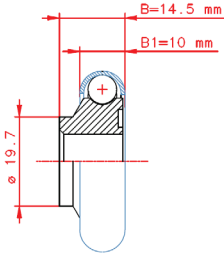
7





# TYPE 03

D=40 mm



Tube (D)					
	D (mm)	Steel	Surface process	Stainless steel	Plastic
	40 mm	-	S	-	-

Spindle ( d )					
	d ( mm )	Steel	Surface process	Stainless steel	Without spindle
	10 mm	O	O	O	S
	12 mm	O	O	O	S

Bearing	
	Type
	FM 40.14
	Fmax= 70 N
	Plastic inner ring
	45,0

Use
<ul style="list-style-type: none"> <li>- Universal element can be used for many applications</li> <li>- Steel Tube (D) and plastic inner ring</li> <li>- Simple design</li> <li>- Smooth-running ball bearing</li> <li>- Temperature range: 0° - 80°</li> </ul>

S- Standard; O- Orderable

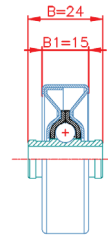
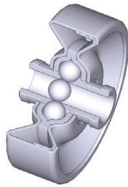


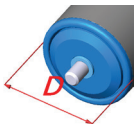





# TYPE 04

D=48 mm



Tube (D)					
	D (mm)	Steel	Surface process	Stainless steel	Plastic
	48 mm	-	S	-	-

Spindle ( d )					
	d ( mm )	Steel	Surface process	Stainless steel	Without spindle
	6 mm	O	O	O	S
	8 mm	O	O	O	S

Bearing	
	Type
	F 16
	Fmax= 200 N

Use
<ul style="list-style-type: none"> <li>- Universal element can be used for many applications</li> <li>- Steel Tube (D) and inner ring ( surface processed )</li> <li>- Simple design</li> <li>- Smooth-running ball bearing</li> <li>- Temperature range: -30° - 100°</li> </ul>

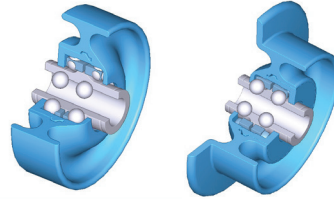
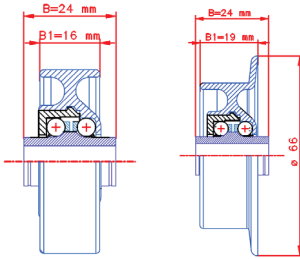
S- Standard; O- Orderable





# TYPE 05

D=48 mm



Tube (D)					
	d ( mm )	Steel	Surface process	Stainless steel	Without spindle
	048 mm	-	-	-	S
	P48 mm	-	-	-	S

Spindle ( d )					
	d ( mm )	Steel	Surface process	Stainless steel	Without spindle
	6 mm	O	O	O	S
	8 mm	O	O	O	S

Bearing		Accessories	
	Type		Seal bonnet
	M 48.02		PR M.02 (03)
	Fmax= 100 N		
	M 48.03		
Fmax= 100 N NIRO			

Use
<ul style="list-style-type: none"> <li>- Universal element can be used for many applications</li> <li>- Plastic Tube (D) and inner ring, with or without flange</li> <li>- Simple design</li> <li>- Smooth-running ball bearing, with seal bonnet if it is necessary</li> <li>- Optionally with stainless steel balls</li> <li>- Temperature range: 0° - 80°</li> </ul>

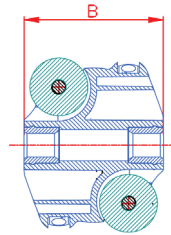
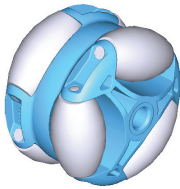
S- Standard; O- Orderable





## TYPE 06

D=40; 48; 60; 80 mm



Tube (D)					
	D (mm) Steel Surface process Stainless steel Plastic	Steel	Surface process	Stainless steel	Without spindle
	40 (B=29) mm	-	-	-	S
	48 (B=39) mm	-	-	-	S
	60 (B=48) mm	-	-	-	S
	80 (B=64) mm	-	-	-	S

Spindle ( d )					
	d ( mm ) Steel Surface process Stainless steel Without spindle	Steel	Surface process	Stainless steel	Without spindle
	8 mm *	-	-	-	S
	10 mm *	-	-	-	S
	12 mm	-	-	-	S
	15 mm	-	-	-	S
	SW9 mm *	-	-	-	S
	SW14 mm	-	-	-	S
	*-only with D=40; 48; 60 mm diameter				

Bearing	Load (max F; N)	
Six barrel-shaped roller with stainless steel spindle.	D=40 mm	100
	D=48 mm	150
	D=60 mm	200
	D=80 mm	400

Use
<ul style="list-style-type: none"> <li>- Conveyance in two directions</li> <li>- Simple design, plastic roller and inner ring</li> <li>- Smooth-running sleeve bearings</li> <li>- Temperature range: 0° - 80°</li> </ul>

S- Standard; O- Orderable

# STARKLINE

11





## TYPE 07

**D=32 mm**



Tube (D)					
	D (mm)	Steel	Surface process	Stainless steel	Without spindle
	32 mm	-	-	-	S

Spindle ( d )		Sizes (mm)			
	d ( mm )	Steel	Surface process	Lenght	4000
	6 mm	-	S	Width	35,5
	Spindle fastened with riveting			Height	27,5
	Bearing: Sleeve			Pitch	36,6

Roller load cap. Max. load capacity of the track (F; N)						
Fmax; N		Clear span	1 m	1,5 m	2 m	2,5m
190		Load capacity	1500	1000	750	600

Use
<ul style="list-style-type: none"> <li>- Conveyance of light weight boxes</li> <li>- Simple design, plastic rollers and surface processed „U” section</li> <li>- Smooth-running sleeve bearings</li> </ul> <p>With or without brake</p> <ul style="list-style-type: none"> <li>- Temperature range: 0° - 80°</li> </ul>

S- Standard; O- Orderable





## TYPE 08

D=32; (42) mm



Tube (D)					
	D (mm)	Steel	Surface process	Stainless steel	Without spindle
	32 mm	-	-	-	S
	With 5 mm high flange on either side				

Spindle ( d )			Sizes (mm)		
	d ( mm )	Steel	Surface process	Lenght	4000
	6 mm	-	S	Width	35,5
	Spindle fastened with riveting Bearing: Sleeve			Height	27,5
				Pitch	36,6

Roller load cap. Max. load capacity of the track (Fmax; N)						
Fmax; N		Clear span	1 m	1,5 m	2 m	2,5m
190		Load capacity	1500	1000	750	600

Use
<ul style="list-style-type: none"> <li>- Conveyance of light weight boxes</li> <li>- Simple design, plastic rollers and surface processed „U” section</li> <li>- Smooth-running sleeve bearings</li> <li>- Flange on either side for guiding</li> <li>- Temperature range: 0° - 80°</li> </ul>

S- Standard; O- Orderable

# STARKLINE

13







## LIGHT CONVEYOR ROLLER

(plastic ball bearing)

## TYPE 1X



# STARKLINE

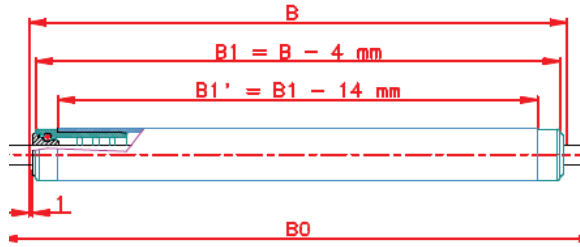
15







# TYPE 11

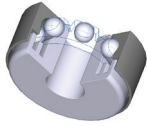
D=16 mm

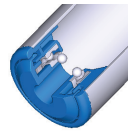
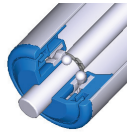
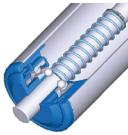


Bmin = 60 mm

Tube (D)					
	D×s (mm)	Steel	Surface process	Stainless steel	Plastic
	16 × 1,0 mm	S	S	S	S

Spindle ( d )					
	d ( mm )	Steel	Surface process	R.M. 1.4301	Without spindle
	5 mm	O	O	O	O
	6 mm	S	S	S	S

Bearing	
	Type
	M 16.00
	Fmax= 50 N
	M 16.01
	Fmax= 50 N
	NIRO

Shaft end					
	Type (S01)		Type (S02)		Type ( S03 )
	Without		Simple		Spring
			$B0=B+ (2 \times \text{shaft end}) \text{ mm}$		$B0=B+20 \text{ mm}$

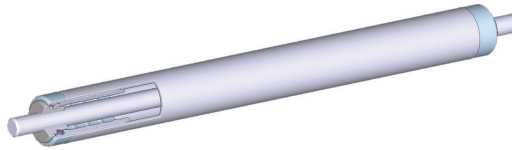
S- Standard; O- Orderable







## TYPE 11



### Use

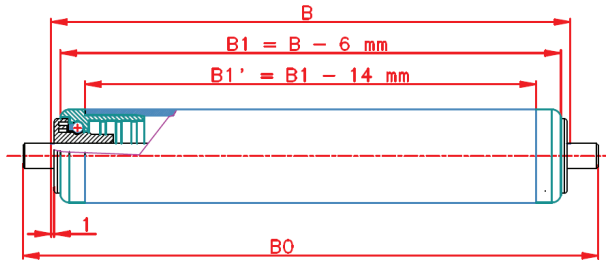
- Special bearing especially for gravity systems
- Steel (00) or stainless steel (01) balls between the plastic outer and inner rings
- Extremely smooth-running ball bearings
- Stainless version for foodstuff-compatibility at a low price.
- Simple design
- Temperature range: 0° - 80°





# TYPE 12

D=20; 30; 40 mm



Bmin = 60 mm

Tube (D)					
	D x s (mm)	Steel	Surface process	Stainless steel	Plastic
	20 x 1,0 mm	O	O	O	O
	20 x 1,5 mm	S	S	S	S
	30 x 1,0 mm	O	O	O	O
	30 x 1,5 mm	S	S	S	-
	32 x 1,5 mm	-	-	-	S
	40 x 1,5 mm	O	S	S	-
	40 x 2,3 mm	-	-	-	S

Spindle ( d )					
	d ( mm )	Steel	Surface process	R.M. 1.4301	Without spindle
	6 mm	O	O	O	O
	8 mm	S	S	S	S
	10 mm	O*	O*	O*	O*

\*- only with- D= 30, 40 mm

Bearing					
	Type		Type		Type
	M 20.00		M 30.00		M 40.00
	Fmax= 50 N		Fmax= 70 N		Fmax= 70 N
	M 20.01		M 30.01		M 40.01
	Fmax= 50 N		Fmax= 70 N		Fmax= 70 N
NIRO	NIRO	NIRO			

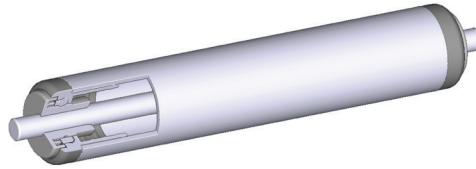
Shaft end					
	Type (S01)		Type (S02)		Type ( S03 )
	Without		Simple		Spring
			$B_0=B+$ (2x shaft end) mm		
	$B_0=B+20 \text{ mm}$				

S- Standard; O- Orderable





## TYPE 12



### Shaft end

	Type (S04)		Type (S05)		Type ( S06 )
	Male Thread		FemaleThread		Milled Flats
	M6; M8; M10		d=10 mm;M6		Flat with:
B0=B+(2×thread)		B0=B - 1 mm		4;5;6; 8 mm	
				B0=B+(2× flat)	

### Accessories

	Deflector		Tube Coating
	BS 30		RCS 30×35 mm
	BS 40		RCS 40×45 mm
		PU; 85shA ; FDA	

### Use

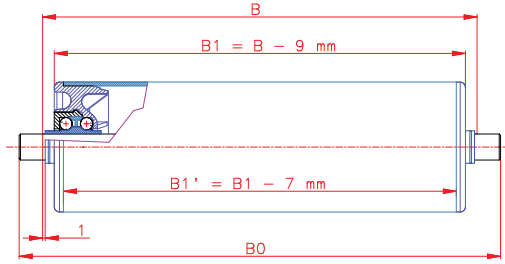
- Special bearing especially for gravity systems
- Steel (00) or stainless steel (01) balls between the plastic outer and inner rings
- Extremely smooth-running ball bearings
- Stainless version for foodstuff-compatibility at a low price.
- Tube with deflector or with coating
- Temperature range: 0° - 80°





# TYPE 13

D=50 mm



Bmin = 51 mm

## Tube (D)

	D x s (mm)	Steel	Surface process	Stainless steel	Plastic
	50 x 1,5 mm	S	S	S	-
	50 x 2,0 mm	O	O	O	S
	50 x 2,4 mm	-	-	-	S

## Spindle ( d )

	d ( mm )	Steel	Surface process	R.M. 1.4301	Without spindle
	8 mm	O	O	O	O
	10 mm	S	S	S	S
	12 mm	S	S	S	S

## Bearing

	Type
	M 50.02
	Fmax= 100 N
	M 50.03
	Fmax= 100 N
NIRO	

## Shaft end

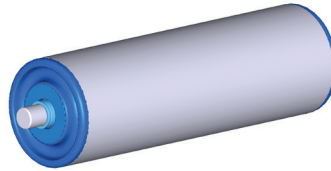
	Type (S01)		Type (S02)		Type ( S03 )
	Without		Simple		Spring
			B0=B+ (2x shaft end) mm		B0=B+20 mm (on-demand)

S- Standard; O- Orderable

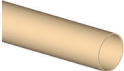




## TYPE 13



### Accessories

	Tube Coating	
	RCS 50x55 mm	
	PU; 85shA; FDA	

### Use

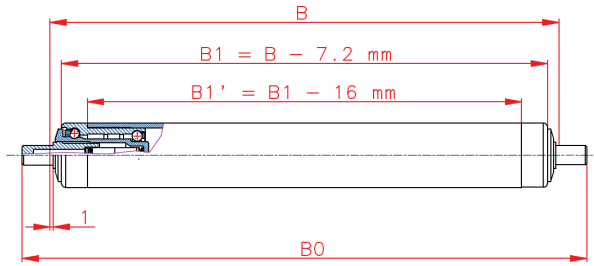
- Special bearing especially for gravity systems
- Steel (02) or stainless steel (03) balls between the plastic outer and inner rings
- Extremely smooth-running ball bearings
- Stainless version for foodstuff-compatibility at a low price
- Bearing with seal bonnet or with coating
- Temperature range: 0° - 80°






## TYPE 14

**D=30, 40 mm**




$B_{min} = 51 \text{ mm}$

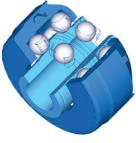
### Tube (D)

	Dxs (mm)	Steel	Surface process	Stainless steel	Plastic
	30 x 1,8 mm	O	O	O	S
	40 x 2,4 mm	O	O	O	S
	20 x 1,5 mm	O	O	O	S


### Spindle ( d )

	d ( mm )	Steel	Surface process	R.M. 1.4301	Without spindle
	6 mm	-	-	-	S
	8 mm	-	-	-	S

### Bearing

	Type	Type	Type
	M 30.00	M 20.00	M 40.00
	Fmax= 100 N	Fmax= 100 N	Fmax= 100 N
	M 30.01	M 20.01	M 40.01
	Fmax= 100 N	Fmax= 100 N	Fmax= 100 N
	NIRO	NIRO	NIRO

### Shaft end

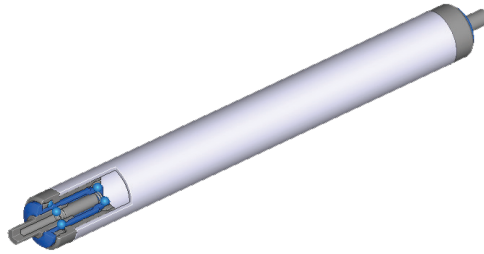
	Type (S01)
	Without

S- Standard; O- Orderable





## TYPE 14



### Use

- Special bearing especially for gravity systems
- Steel (00) or stainless steel (01) balls between the plastic outer and inner rings
- Extremely smooth-running ball bearings
- Stainless version for foodstuff-compatibility at a low price
- Bearing with seal bonnet or with coating
- Temperature range: 0° - 80°









## UNIVERSAL CONVEYOR ROLLER

(plastic ball bearing)

# TYPE 2X



# STARKLINE

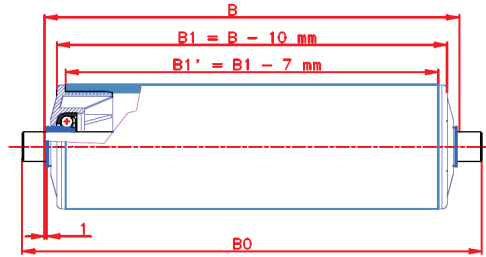
25






# TYPE 21

D=40; 50 mm




Bmin = 55 mm

## Tube (D)

	Dx s (mm)	Steel	Surface process	Stainless steel	Plastic
	40 x 3,0 mm	O	O	O	S
	50 x 1,5 mm	S	S	S	S
	50 x 2,4 mm	-	-	-	S

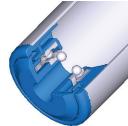
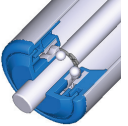
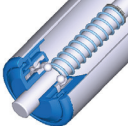
## Spindle ( d )

	d ( mm )	Steel	Surface process	R.M. 1.4301	Without spindle
	8 mm	S	S	S	O
	10 mm	S	S	S	O
	12 mm	S	S	S	O

## Bearing

	Type	
	M 40.25	
	Fmax= 500 N	
	M 50.25	
	Fmax= 500 N	

## Shaft end

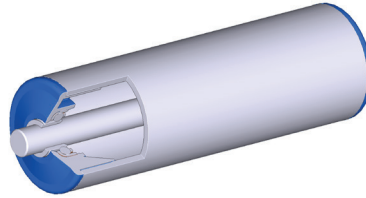
	Type (S01)		Type (S02)		Type ( S03 )
	Without		Simple		Spring
			$B0=B+(2 \times \text{shaft end}) \text{ mm}$		$B0=B+(2 \times (10-15\text{mm}))$

S- Standard; O- Orderable





## TYPE 21



### Shaft end

	Type (S04)		Type (S05)		Type ( S06 )
	Male Thread		FemaleThread		Milled Flats
	M8; M10; M12		d=10 mm;M6 d=12 mm;M8		Flat with: 4;5;6;8;10 mm
	$B0=B+(2 \times \text{thread})$		$B0=B - 1 \text{ mm}$		$B0=(B+2X \text{ flat})$

### Accessories

	Tube Coating
	RCS 40x55 mm
	RCS 50x55 mm
	PU; 85shA ; FDA

### Use

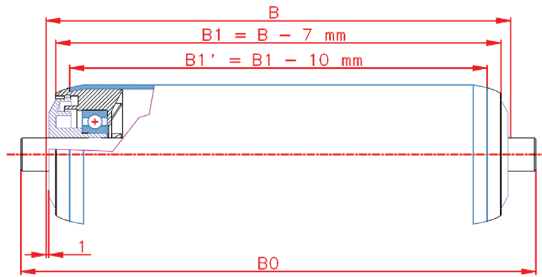
- Special bearing especially for gravity systems
- Rollers with ball bearing in plastic housing
- Extremely smooth-running ball bearings commonly in plastic tube
- Simple roller at a low price
- Tube with or without coating
- Temperature range: 0° - 80°






# TYPE 22

D=50 mm




Bmin = 55 mm



## Tube (D)

	D x s (mm)	Steel	Surface process	Stainless steel	Plastic
	50 x 1,5 mm	O	S	S	-

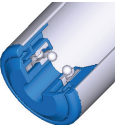
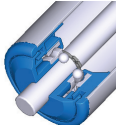
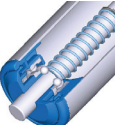
## Spindle ( d )

	d ( mm )	Steel	Surface process	R.M. 1.4301	Without spindle
	8 mm	S	S	S	S
	10 mm	S	S	S	S
	12 mm	S	S	S	S
	14 mm	S	S	S	S
	11SW mm	S	S	S	S

## Bearing

	Type		Type	
	MS 50.30		MS50.	
	Fmax= 800 N		6002 2RS C3	
	MS 50.31		Fmax= 800 N	
	Fmax= 250 N			
NIRO				

## Shaft end

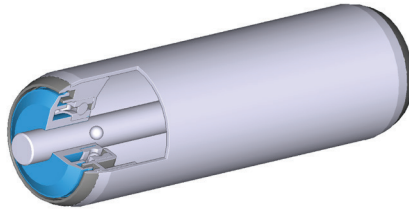
	Type (S01)		Type (S02)		Type ( S03 )
	Without		Simple		Spring
			$B0=B+(2 \times \text{shaft end}) \text{ mm}$		$B0=B+(2 \times (10-15\text{mm}))$

S- Standard; O- Orderable





## TYPE 22



### Shaft end

	Type (S04)		Type (S05)		Type (S06)
	Male Thread		Female Thread		Milled Flats
	M8; M10; M12; M14		d=10 mm; M6 d=12 mm; M8 d=14 mm; M10		Flat with: 4;5;6;8;10;12 mm
B0=B+(2× thread)		B0=B - 1 mm		B0=(B+2X flat)	

### Accessories

	Tube Coating
	RCS 50×55 mm
	PU; 85shA ; FDA

### Use

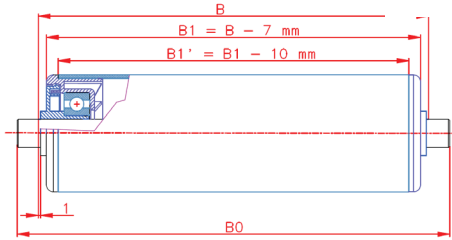
- Steel bearing ( 6002 2RS C3 ) especially for gravity systems
- Ball bearing in plastic housing with flange
- Smooth-running ball bearings
- Simple but effective roller at a low price
- One of the most popular rollers, foodstuff-compatibility on-demand
- Tube with or without coating, Temperature range: 0° - 80°






# TYPE 23

D=50; 60 mm

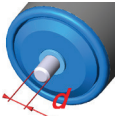


Bmin = 55 mm



## Tube (D)

	D x s (mm)	Steel	Surface process	Stainless steel	Plastic
	40 x 1,5 mm	O	S	S	-
50 x 1,5 mm	O	S	S	-	-
50 x 2,0 mm	S	S	S	O	-
50 x 2,8 mm	-	-	-	-	S
51 x 2,6 mm	S	S	O	-	-
51 x 2,9 mm	S	S	O	-	-
60 x 1,5 mm	O	S	S	-	-
60 x 2,0 mm	S	S	S	-	-
60 x 3,0 mm	S	S	S	-	-
63 x 3,0 mm	-	-	-	-	S

## Spindle ( d )

	d ( mm )	Steel	Surface process	R.M. 1.4301	Without spindle
	8 mm	S	S	S	S
10 mm	S	S	S	S	S
12 mm	S	S	S	S	S
14 mm	S	S	S	S	S
15 mm	S	S	S	S	S
17 mm	S	S	S	S	S
11SW mm	S	S	S	S	S

## Bearing

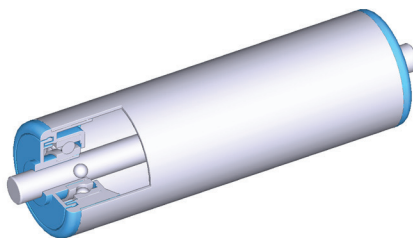
	Type		Type	Type	Type
	MS 50.30		MS50.	MS50.;MS60	MS50.;MS60
	Fmax= 800 N		6002 2RS C3	6202 ZZ C3;	6003 ZZ C3;
	MS 50.31		Fmax= 800 N	Fmax= 800 N	Fmax= 800 N
Fmax= 250 N					
NIRO					

S- Standard; O- Orderable





## TYPE 23



### Shaft end

	Type (S01)		Type (S02)		Type (S03)
	Without		Simple		Spring
			$B0=B+(2 \times \text{shaft end}) \text{ mm}$		$B0=B+(2 \times (10-15\text{mm}))$

### Shaft end

	Type (S04)		Type (S05)		Type (S06)
	Male Thread		Female Thread		Milled Flats
	M8; M10; M12; M14		$d=10 \text{ mm}; M6$ $d=12 \text{ mm}; M8$ $d=14 \text{ mm}; M10$		Flat with: 4;5;6;8;10;12 mm
	$B0=B+(2 \times \text{thread})$		$B0=B-1 \text{ mm}$		$B0=(B+2X \text{ flat})$

### Accessories

	Tube Flange		Tube Coating		Cone Element
	PP F.50-130		RCS 50x55 mm		Plastic
	PP F.60-130		RCS 60x65 mm		D=50 mm
	Usable for lower force		PU; 85shA ; FDA		100 mm

### Use

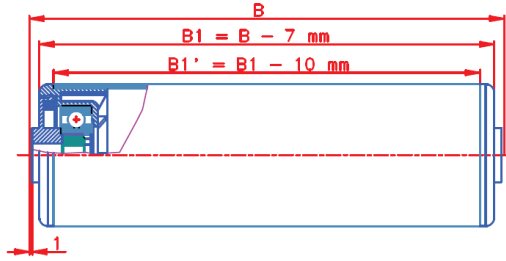
- Steel bearing ( 6002 2RS C3, 6202 ZZ C3, 6003 ZZ C3 ) especially for gravity systems
- Ball bearing in plastic housing with simple sealing
- Smooth-running ball bearings
- Simple but effective roller at a low price
- One of the most popular rollers, foodstuff-compatibility on-demand
- Tube with or without coating, Temperature range: 0° - 80°





# TYPE 24

D=50; 60 mm



Bmin = 55 mm

## Tube (D)

	D x s (mm)	Steel	Surface process	Stainless steel	Plastic
	50 x 1,5 mm	O	S	S	-
	60 x 1,5 mm	O	S	S	-

## Bearing

	Type		Type	
	MS50.		MS60.	
	6202 2RS C3		6202 2RS C3	
Fmax= 600 N		Fmax= 600 N		

## Shaft end

	Type (S01)	
	Without; M8 nut	

## Accessories

	Tube Flange		Tube Coating		Cone Element
	PP F.50-130		RCS 50x55 mm		Plastic
	PP F.60-130		RCS 60x65 mm		D=50 mm
	Usable for lower force		PU; 85shA ; FDA		100 mm

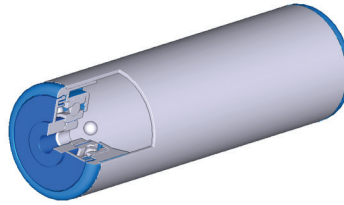
S- Standard; O- Orderable







## TYPE 24



### Use

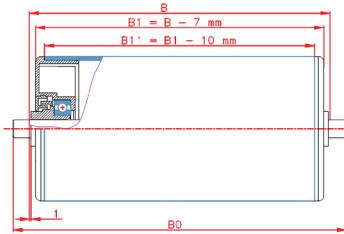
- Steel bearing ( 6002 2RS C3 ) especially for gravity systems
- Ball bearing in plastic housing with simple sealing
- Larger diameters to manage average loads
- Simple but effective roller at a low price
- To build standalone conveyor roller tracks or manage conveyor belts as well
- Tube with or without coating, Temperature range: 0° - 80°






## TYPE 25

D=63; 80; 89 mm




Bmin = 60 mm




### Tube (D)

	D×s (mm)	Steel	Surface process	Stainless steel	Plastic
	63,5 × 2,9 mm	S	S	S	S
80 × 2,0 mm	S	S	S	S	-
80 × 3,0 mm	S	S	S	S	-
89 × 3,0 mm	S	S	S	S	-


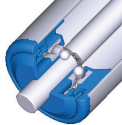
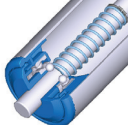
### Spindle ( d )

	d ( mm )	Steel	Surface process	R.M. 1.4301	Without spindle
	12 mm	S	S	S	S
15 mm	S	S	S	S	O
11SW mm	S	S	S	S	O
20 mm	S	S	S	S	O

### Bearing

	Type		Type		Type
	MS80.30		MS80.		MS63.(80;89)
Fmax= 800 N	6002 2RS C3	6204 2RS C3			
MS 80.31	Fmax= 1500 N	d=12;15;			
Fmax= 250 N	d=12;15;	11SW mm			
NIRO					

### Shaft end

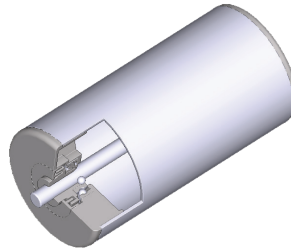
	Type (S02)		Type (S03)		Type ( S04 )
	Simple		Spring		Male Thread
B0=B+ (2× Shaft end) mm	B0=B+20mm (d=12; 15 with 11Sw; 10-15 mm)	M12; M14; M16; M18; M20			
		B0=B+(2x thread)			

S- Standard; O- Orderable





## TYPE 25



### Shaft end

	Type (S04)		Type (S05)		Type (S06)
	Male Thread		Female Thread		Milled Flats
	M8; M10; M12; M14		d=10 mm; M6 d=12 mm; M8 d=14 mm; M10		Flat with: 4;5;6;8;10;12 mm
B0=B+(2× thread)		B0=B - 1 mm		B0=(B+2X flat)	

### Accessories

	Tube Flange		Tube Coating
	PP F.50-130		RCS 89×94 mm
	PP F.60-130		PU; 85shA ; FDA
	Usable for lower force		

### Use

- Steel bearing ( 6002 2RS C3, 6202 ZZ C3, 6003 ZZ C3 ) especially for gravity systems
- Ball bearing in plastic housing with simple sealing
- Smooth-running ball bearings
- Simple but effective roller at a low price
- One of the most popular rollers, foodstuff-compatible on-demand
- Tube with or without coating, Temperature range: 0° - 80°



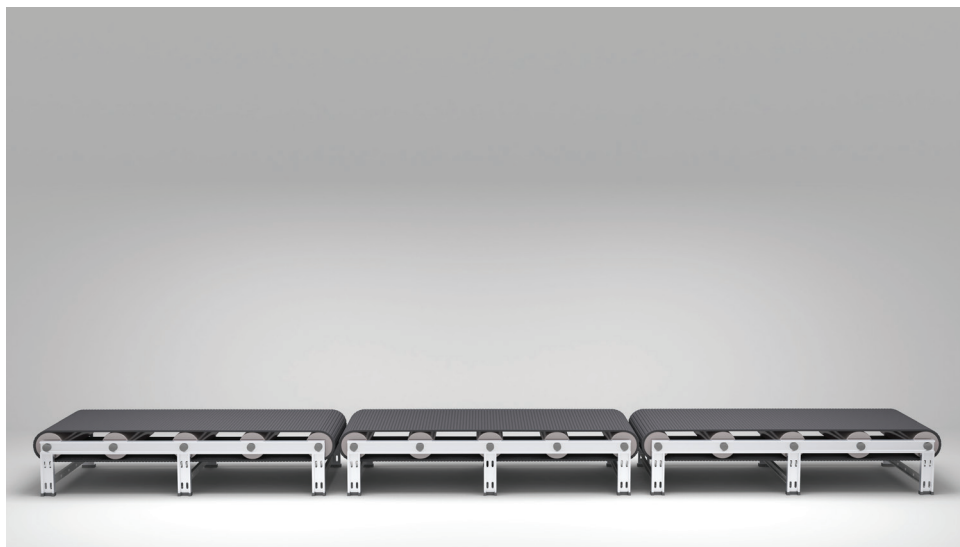




## UNIVERSAL CONVEYOR ROLLER

(steel house)

**TYPE 3X** 



# STARKLINE

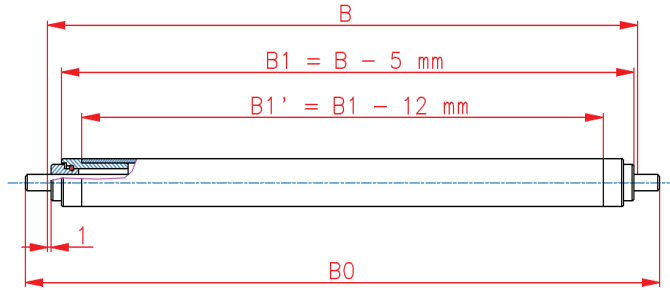
37





# TYPE 30

D=12 mm



Bmin = 55 mm

## Tube (D)

	D×s (mm)	Steel	Surface process	Stainless steel	Plastic
	12 × 1 mm	O	O	O	-

## Spindle ( d )

	d ( mm )	Steel	Surface process	R.M. 1.4301	Without spindle
	4 mm	S	S	S	S

## Bearing

	Type	
	F 16.01	
	Fmax= 330 N	

## Shaft end

	Type (S01)		Type (S02)		Type ( S03 )
	Without		Simple		Spring
		$B0=B+(2 \times \text{shaft end}) \text{ mm}$			$B0=B+(2 \times (10-15\text{mm}))$

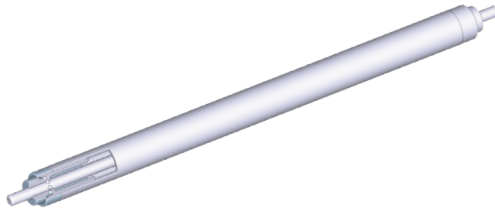
## Shaft end

	Type (S04)	
	Male Thread	
	M4	
	$B0=B+(2 \times \text{thread})$	





## TYPE 30



### Use

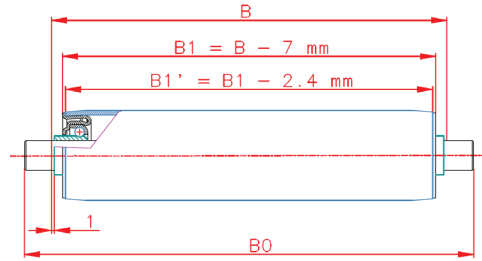
- Roller with steel bearing for gravity systems or for conveyor belts
- Ball bearing in a deep drawn surface processed steel housing
- Small diameters to manage average loads
- Simple but effective roller at a low price
- To build standalone conveyor roller tracks or manage conveyor belts as well
- Tube with or without coating, Temperature range: 0° - 100°





# TYPE 31

D=30



Bmin = 27 mm

## Tube (D)

	D x s (mm)	Steel	Surface process	Stainless steel	Plastic
	30 x 1,2 mm	O	O	O	-
	30 x 1,5 mm	S	S	S	-

## Spindle ( d )

	d ( mm )	Steel	Surface process	R.M. 1.4301	Without spindle
	8 mm	S	S	S	S
	10 mm	S	S	S	S

## Bearing

	Type	
	F 30.16	
	Fmax= 330 N	

## Shaft end

	Type (S01)		Type (S02)		Type ( S03 )
	Without		Simple		Spring
			$B0=B+(2 \times \text{shaft end}) \text{ mm}$		$B0=B+(2 \times (10-15\text{mm}))$

## Shaft end

	Type (S04)		Type (S05)		Type ( S06 )
	Male Thread		Female Thread		Milled Flats
	M8; M10		d=10 mm; M6		Flat with: 4;5;6;8 mm
$B0=B+(2 \times \text{thread})$	$B0=B - 1 \text{ mm}$	$B0=(B+2X \text{ flat})$			

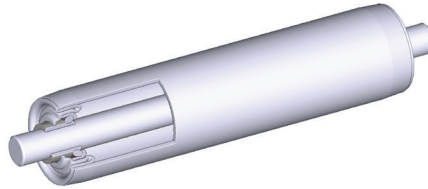
S- Standard; O- Orderable



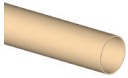





## TYPE 31



### Accessories

	Tube Coating		Conical element
	RCS 30×35 mm		Plastic
	PU; 85shA ; FDA		D=30 mm
			100 mm

### Use

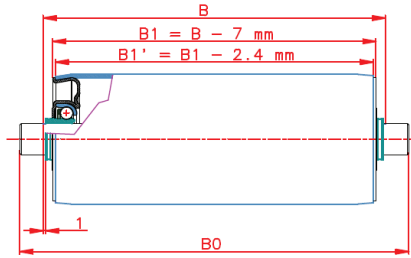
- Roller with steel bearing for gravity systems or for conveyor belts
- Ball bearing in a deep drawn surface processed steel housing
- Small diameters to manage average loads
- Simple but effective roller at a low price
- To build standalone conveyor roller tracks or manage conveyor belts as well
- Tube with or without coating, Temperature range: 0° - 100°





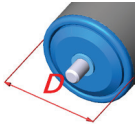
# TYPE 32

D=40; 50; 60; 80 mm



Bmin = 30 mm

## Tube (D)



D×s (mm)	Steel	Surface process	Stainless steel	Plastic
40 × 1,5 mm *	O	S	S	-
40 × 2,0 mm *	O	O	O	-
50 × 1,5 mm	O	S	S	-
50 × 2,0 mm	O	O	O	-
51 × 2,6 mm	O	O	O	-
60 × 1,5 mm	O	S	S	-
60 × 2,0 mm	O	O	O	-
80 × 2,0 mm	O	O	O	-
80 × 3,0 mm	O	O	O	-

\* - Only with F .20 bearing

## Spindle ( d )



d ( mm )	Steel	Surface process	R.M. 1.4301	Without spindle
8 mm *	S	S	S	S
10 mm *	S	S	S	S
12 mm	S	S	S	S
11SW mm	S	S	S	S
14 mm	S	S	S	S
15 mm	S	S	S	S
11SW mm	S	S	S	S

\* - Only with F .20 bearing

## Bearing



Type
F 40(48).20
Fmax= 800 N
F 50(60).20
Fmax= 800 N



Type
F 80.20
Fmax= 800 N



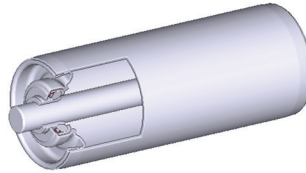
Type
F 50.30-2
Fmax= 1200 N
F 60.30-2
Fmax= 1200 N

S- Standard; O- Orderable





## TYPE 32



Shaft end					
	Type (S01)		Type (S02)		Type (S03)
	Without		Simple		Spring
		B0=B+ (2x shaft end) mm		B0=B+(2x (10- 15mm))	

Shaft end					
	Type (S04)		Type (S05)		Type (S06)
	Male Thread		Female Thread		Milled Flats
	M8; M10; M12; M14		d=10 mm; M6 d=12 mm; M8 d=15 mm; M10		Flat with: 4;5;6;8;10 mm
B0=B+(2x thread)		B0=B - 1 mm		B0=(B+2X flat)	

Accessories					
	Seal Bonnet		Tube Flange		Tube Coating
	PR F.20		PP F.50-130		RCS 50x55 mm
	PR F.30-2		PP F.60-130		RCS 60x65 mm
		PP F.80-150	RCS 80x85 mm	PU; 85shA ; FDA	
		Usable for lower force			

Accessories	
	Conical element
	Plastic
	D= 50 mm
	100 mm-600 mm

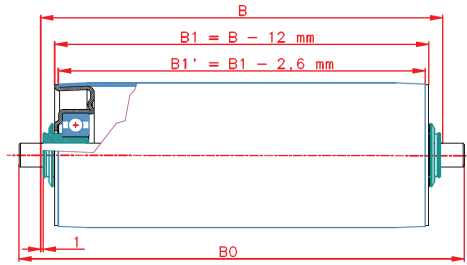
Use
- Roller with steel bearing for gravity systems or for conveyor belts
- Ball bearing in a deep drawn surface processed steel housing
- Small diameters to manage average loads
- Simple but effective roller at a low price with or without seal bonnet or flange
- Can be used under bad circumstances ( eg. cold storage, agricultural use)
- With or without tube coating, Temperature range: 0° - 100°





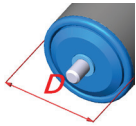
# TYPE 33

D= 50; 60; 80 mm



Bmin = 45 mm

## Tube (D)



D×s (mm)	Steel	Surface process	Stainless steel	Plastic
50 × 1,5 mm	O	S	S	-
50 × 2,0 mm	O	O	O	-
51 × 2,6 mm	O	O	O	-
50 × 3,0 mm *	O	O	O	-
60 × 1,5 mm	O	S	S	-
60 × 2,0 mm	S	S	S	-
60 × 3,0 mm**	O	O	O	-
80 × 2,0 mm	O	O	O	-

\* - Only with F 50.30- bearing

\*\* - Only with F 60.6202- bearing

## Spindle ( d )



d ( mm )	Steel	Surface process	R.M. 1.4301	Without spindle
10 mm	S	S	S	S
12 mm	S	S	S	S
11SW mm	S	S	S	S
15 mm	S	S	S	S
17 mm	S	S	S	S

## Bearing



Type
F 50.30
Fmax= 1200 N
F 60(80).30
Fmax= 1200 N



Type
FS 50.6202
Fmax= 1200 N
FS 60.6202
Fmax= 1200 N



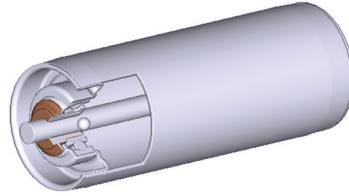
Type
FS 80.6202
Fmax= 1200 N

S- Standard; O- Orderable





## TYPE 33



Shaft end					
	Type (S01)		Type (S02)		Type (S03)
	Without		Simple		Spring
		B0=B+ (2× shaft end) mm		B0=B+(2× (10- 15mm))	

Shaft end					
	Type (S04)		Type (S05)		Type (S06)
	Male Thread		Female Thread		Milled Flats
	M10; M12; M14		d=10 mm;M6 d=12 mm;M8 d=15 mm;M10		Flat with: 6;8;10;12 mm
B0=B+(2× thread)		B0=B - 1 mm		B0=(B+2X flat)	

Accessories					
	Seal Bonnet		Tube Flange		Tube Coating
	PR F.30		PP F.50-130		RCS 50×55 mm
			PP F.60-130		RCS 60×65 mm
		PP F.80-150	RCS 80×85 mm	PU; 85shA ; FDA	

Accessories		Use
	Conical element	<ul style="list-style-type: none"> <li>- Roller with steel bearing for gravity systems or for conveyor belts</li> <li>- Ball bearing in a deep drawn surface processed steel housing</li> <li>- Small diameters to manage average loads</li> <li>- Simple but effective roller at a low price with or without seal bonnet or flange</li> <li>- Can be used under bad circumstances ( eg. cold storage, agricultural use)</li> <li>- With or without tube coating, Temperature range: 0° - 100°</li> </ul>
	Plastic	
	D= 50 mm	
	90 mm-990 mm	







## HEAVY-DUTY CONVEYOR ROLLER

(steel house)

**TYPE 4X**



**STARKLINE**

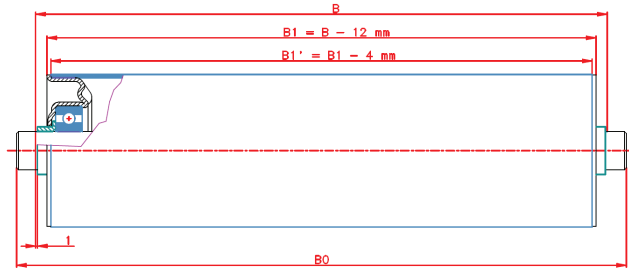
47





# TYPE 41

D= 63; 80; 89; 108 mm



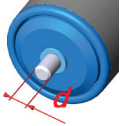
Bmin = 60 mm

## Tube (D)



D×s (mm)	Steel	Surface process	Stainless steel	Plastic
63,5 × 2,9 mm	S	S	O	-
80 × 2,0 mm	O	O	O	-
80 × 3,0 mm	O	O	O	-
89 × 3,0 mm	S	S	O	-
89 × 3,25 mm	O	O	O	-
108 × 3,25 mm	S	S	O	-

## Spindle ( d )



d ( mm )	Steel	Surface process	R.M. 1.4301	Without spindle
16 mm	O	O	O	O
17 mm	S	S	S	O
14 SW mm	O	O	O	O
20 mm	S	S	S	O
25 mm *	O	O	O	O

## Bearing



Type
FS63.6004
Fmax= 2000 N

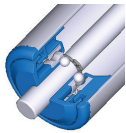


Type
FS80.6204
Fmax= 2500 N
FS89.6204
Fmax= 2500 N

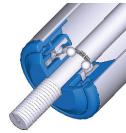


Type
FS108.6204
Fmax= 2500 N
FS108.6205
Fmax= 2500 N

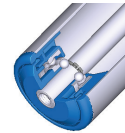
## Shaft end



Type (S02)
Simple
B0=B+ (2× shaft end) mm



Type (S04)
Male Thread
M16; M20
B0=B+(2× thread)



Type (S05)
Female Thread
d=16 mm;M10
d=20 mm;M12
d=25 mm;M14
B0=B - 1 mm

S- Standard; O- Orderable







## TYPE 41



### Shaft end

	Type ( S06 )
	Milled Flats
	Flat with: 10;12;14;16;18 mm
	$B0=(B+2X \text{ flat})$

### Accessories

	Tube Flange		Tube Coating
	PP F.80-150		RCS 80×85 mm
	PP F.89-150		RCS 89×94 mm
	PP F.108-150		PU; 85shA ; FDA

### Use

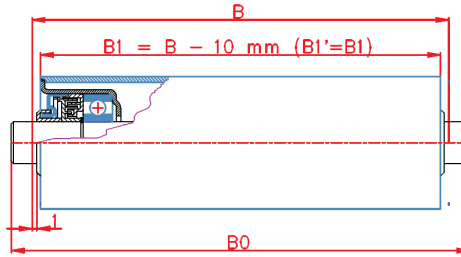
- Roller with steel bearing for gravity systems or for conveyor belts
- Ball bearing ( 6004 2RS C3; 6204 2RS C3) in a deep drawn surface processed steel housing
- Suitable for heavy conveyed items, tube flange is available
- Extraordinarily robust design
- Can be used under bad circumstances ( eg. cold storage, agricultural use)
- With or without tube coating, Temperature range: 0° - 100°





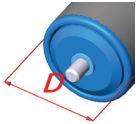
## TYPE 42

D= 60;63;70;76 mm



Bmin = 85 mm

### Tube (D)



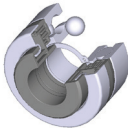
D×s (mm)	Steel	Surface process	Stainless steel	Plastic
51 × 2,9 mm	S	S	O	-
60 × 3,0 mm	S	S	O	-
63,5 × 2,9 mm	S	S	S	-
70 × 2,9 mm	S	S	O	-
76 × 2,9 mm	S	S	O	-

### Spindle ( d )



d ( mm )	Steel	Surface process	R.M. 1.4301	Without spindle
17 mm	S	O	S	-
20 mm	S	O	S	-

### Bearing

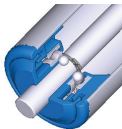


Type
FH60.6204; 6203
Fmax= 2000 N
FH63.6204
Fmax= 2000 N

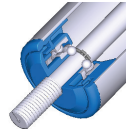


Type
FH70.6204; 6203
Fmax= 2500 N
FS76.6204
Fmax= 1200 N

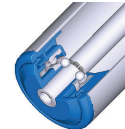
### Shaft end



Type (S02)
Simple
$B_0 = B + (2 \times \text{shaft end}) \text{ mm}$



Type (S04)
Male Thread
M16; M18; M20
$B_0 = B + (2 \times \text{thread})$



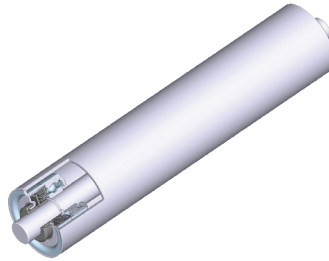
Type (S05)
Female Thread
M10; M12; M14
$B_0 = B - 1 \text{ mm}$

S- Standard; O- Orderable





## TYPE 42



### Shaft end

	Type ( S06 )
	Milled Flats
	Flat with: 10;12;14;16;18 mm
	B0=(B+2X flat)

### Accessories

	Tube Flange		Tube Coating
	PP F.60-130		RCS 60x65 mm
			RCS 70x75 mm
			PU; 85shA ; FDA

### Use

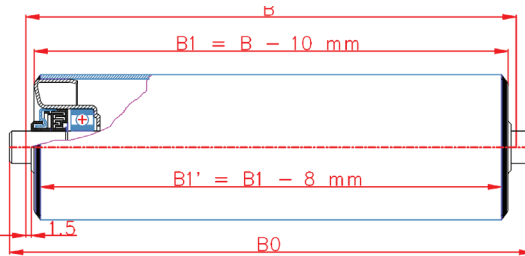
- Roller with steel bearing for gravity systems or for conveyor belts
- Ball bearing ( 6204 2RS C3) in a deep drawn surface processed steel housing
- Labyrinth sealing
- Suitable for heavy conveyed items, tube flange is available
- Extraordinarily robust welded design
- Can be used under bad circumstances ( eg. cold storage, agricultural use, mine industry)
- With or without tube coating, Temperature range: 0° - 100°





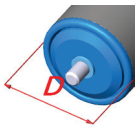
# TYPE 43

D= 63; 80; 89; 108; 133; 159 mm



Bmin = 92 mm

## Tube (D)



D×s (mm)	Steel	Surface process	Stainless steel	Plastic
63,5 × 1,5 mm	O	O	O	-
80 × 2,0 mm	S	O	O	-
80 × 3,0 mm	O	O	O	-
89 × 3,0 mm	S	S	O	-
108 × 3,25 mm	S	S	O	-
133 × 3,6 mm	S	S	O	-
159 × 4,5 mm	S	S	-	-

\* if D=133; 159 mm Bmin=130 mm

## Spindle ( d )



d ( mm )	Steel	Surface process	R.M. 1.4301	Without spindle
17 mm	S	S	S	-
20 mm	S	O	S	-
25 mm	S	O	S	-
30 mm	S	O	S	-
40 mm	S	O	S	-

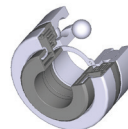
## Bearing



Type
FH63.6204
Fmax= 2000 N
FH80.6204
Fmax= 2000 N



Type
FH89.6204
Fmax= 2500 N
FH108.6204
Fmax= 2000 N



Type
FH133.6204
Fmax= 2500 N
FH89.6205
Fmax= 2000 N

\*FH63.6204 NIRO

\*FH89.6204 NIRO

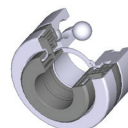
\*FH108.6204 NIRO



Type
FH108.6205
Fmax= 2000 N
FH133.6205
Fmax= 2000 N



Type
FH108.6306
Fmax= 2500 N
FH133.6306
Fmax= 1200 N



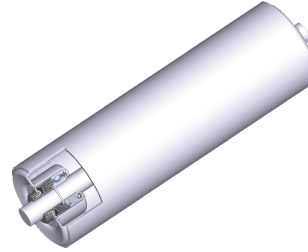
Type
FH133.6308
Fmax= 2500 N
FH159.6308
Fmax= 1200 N

S- Standard; O- Orderable





## TYPE 43



### Shaft end

	Type (S02)		Type (S04)		Type (S05)
	Simple		Male Thread		Female Thread
	$B0=B+(2 \times \text{shaft end})$ mm		M16; M20; M24		M10; M12; M14
			$B0=B+(2 \times \text{thread})$		$B0=B - 1$ mm

### Shaft end

	Type (S06)	
	Milled Flats	
	Flat with: 12;14;16;18; 20 mm	
	$B0=(B+2X \text{ flat})$	

### Accessories

	Tube Flange		Tube Coating
	PP F.80-150		RCS 80x85 mm
	PP F.89-150		RCS 89x94 mm
	PP F.108-150		PU; 85shA ; FDA

### Use

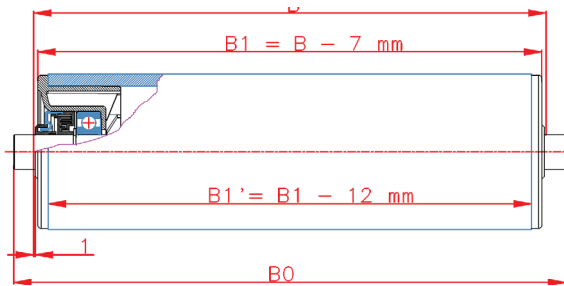
- Roller with steel bearing for gravity systems or for conveyor belts
- Ball bearing ( 6204 2RSC3; 6205 2RSC3; 6306 2RSC3; 6308 2RSC3)  
in a deep drawn surface processed steel housing
- Labyrinth sealing
- Suitable for heavy conveyed items, tube flange is available
- Extraordinarily robust welded design
- Can be used under bad circumstances ( eg. cold storage, agricultural use, mine industry)
- With or without tube coating, Temperature range: 0° - 100°






## TYPE 44

**D= 89; 90; 108 mm**

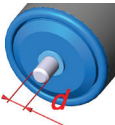


Bmin = 103 mm




### Tube (D)

	D×s (mm)	Steel	Surface process	Stainless steel	Plastic
	89 × 3,0 mm	S	S	S	-
	90 × 7,0 mm	-	-	-	S
	108 × 3,2 mm	S	S	S	-

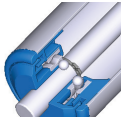
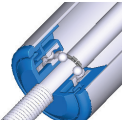
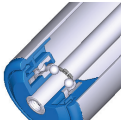
### Spindle ( d )

	d ( mm )	Steel	Surface process	R.M. 1.4301	Without spindle
	20 mm	S	S	S	-
	17 mm	S	S	S	-

### Bearing

	Type		Type		Type (S05)
	ML 89 6204		ML 90 6204;6203		ML 108 6204
	Fmax= 1500 N d= 20 mm		Fmax= 1500 N d=20 mm		6204 d=20 mm

### Shaft end

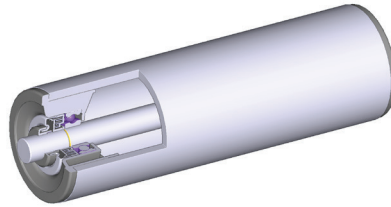
	Type (S02)		Type (S04)		Type (S05)
	Simple		Male Thread		Female Thread
	B0=B+ (2× shaft end) mm		M12		d=20 mm;M10 d=20 mm;M12 d=20 mm;M14
		B0=B+(2x thread)			B0=B-1 mm

S- Standard; O- Orderable

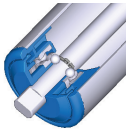




## TYPE 44



### Shaft end



Type (S06)
Milled Flats
Flat with: 4;5;6;8;10;12;14 mm
$B0=(B+2x \text{ flat})$

### Use

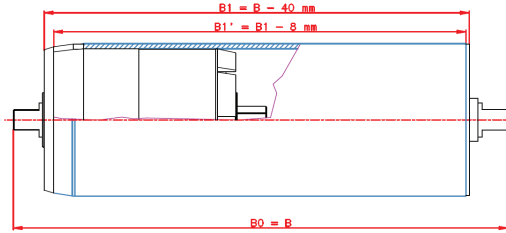
- Plastic bearing housing, molded version
- Roller with steel bearing for gravity systems or for conveyor belts
- Ball bearing ( 6204 2RSC3; ZZC3; 6303 ZZC3 )
- Labyrinth sealing
- Aggressively corrosive substances ( fertilizer)
- With or without tube coating, Temperature range: 0° - 100°





# TYPE 45

D= 89 mm



Bmin=250 mm

## Tube (D)

	D×s (mm)	Steel	Surface process	Stainless steel	Plastic
	89 × 3,0 mm	S	S	O	-

## Spindle ( d )

	d ( mm )	Steel	Surface process	R.M. 1.4301	Without spindle
	25 mm	S	O	S	-

## Bearing

	Type	200; 400; 600; 800 kg load prepared
	FH89.6305 2x NIRO	

## Accessories

	Tube Flange		Tube Coating	
	PP F.89-150		RCS 89×94 mm	
	PP F.108-150		PU;85shA; FDA	

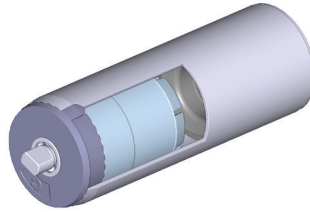
S- Standard; O- Orderable







## TYPE 45



### Use

- Palet breaking roller
- To work with the console
- Roller with steel bearing for gravity systems or palet breaking roller
- Ball bearing ( 6205 2RSC3 )
  - in a deep drawnd surface processed steel housing
- Suitable for heavy conveyed items, palets is available
- With or without tube coating, Temperature range: 0° - 100°







## DRIVE CONVEYOR ROLLER

(steel house)

**TYPE 5X**



# STARKLINE

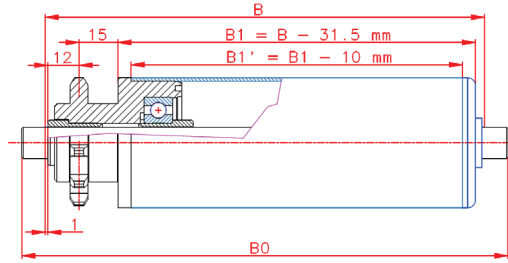
59





# TYPE 51-23

D= 50; 60; (63) mm



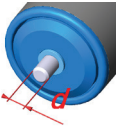
Bmin=100 mm

## Tube (D)



D×s (mm)	Steel	Surface process	Stainless steel	Plastic
50 × 1,5 mm	O	S	S	-
50 × 2,0 mm	S	S	S	O
50 × 2,8 mm	-	-	-	S
51 × 2,6 mm	S	S	O	-
60 × 1,5 mm	O	S	S	-
63 × 3,0 mm	-	-	-	S

## Spindle ( d )



d ( mm )	Steel	Surface process	R.M. 1.4301	Without spindle
8 mm	S	S	S	S
10 mm	S	S	S	S
12 mm	S	S	S	S

## Bearing

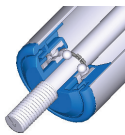


Type
MS50.;MS60 6202 ZZ C3
Fmax= 800 N

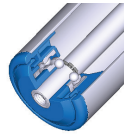


Type
MS50. 6002 2RS C3
Fmax= 800 N

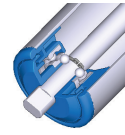
## Shaft end



Type (S04)
MaleThread
M8; M10; M12; M14
B0=B+(2× thread)



Type (S05)
FemaleThread
d=10 mm;M6 d=12 mm;M8 d=14 mm;M10
B0=B - 1 mm



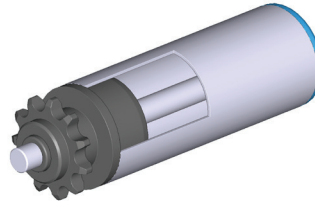
Type ( S06 )
Milled Flats
Flat with: 4;5;6;8;10;12 mm
B0=(B+2X flat)

S- Standard; O- Orderable





## TYPE 51-23



### Accessories

	Tube Flange		Tube Coating
	PP F.50-130		RCS 50×55 mm
	Usable for lower force		RCS 60×65 mm
			PU; 85shA ; FDA

### Use

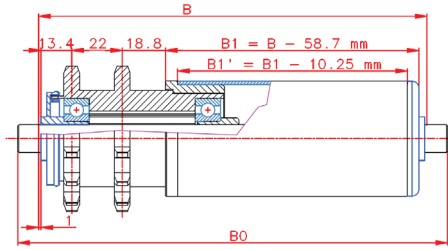
- Both plastic and metal drive final element available. The drive is fixed with plastic compression ring.
- The drive roller MKR 08B1 Z=11; can be made of fixed and driven version
- Roller with steel bearing for driven systems
- Ball bearing ( 6202; 6002; 6003; 6303 )  
in a deep drawnd surface processed steel housing
- Single labyrinth seal
- Suitable for heavy conveyed items, tube flange is available
- With or without tube coating, Temperature range: 0° - 100°





# TYPE 52-23

D= 50; 60 mm



Bmin = 125 mm

## Tube (D)

	D×s (mm)	Steel	Surface process	Stainless steel	Plastic
	50 × 1,5 mm	O	S	S	-
	60 × 1,5 mm	O	S	S	-
	63 × 3,0 mm	S	S	S	-

## Spindle ( d )

	d ( mm )	Steel	Surface process	R.M. 1.4301	Without spindle
	12 mm	S	S	S	-

## Bearing

	Type		Type	
	MS50.; MS60 6202 ZZ C3;		MS50. 6002 2RS C3	
Fmax= 800 N		Fmax= 800 N		

## Shaft end

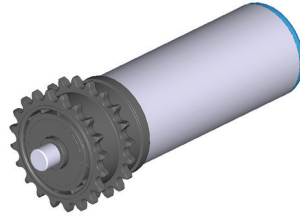
	Type (S04)		Type (S05)		Type ( S06 )
	MaleThread		FemaleThread		Milled Flats
	M8; M10; M12; M14		d=10 mm;M6 d=12 mm;M8 d=14 mm;M10		Flat with: 4;5;6;8;10;12 mm
B0=B+(2× thread)		B0=B - 1 mm		B0=(B+2X flat)	

S- Standard; O- Orderable





## TYPE 52-23



### Accessories

	Tube Flange		Tube Coating		Conical element
	PP F.50-130		RCS 50×55 mm		Plastic
	PP F.60-130		RCS 60×65 mm		D=50 mm
	Usable for lower force		PU; 85shA ; FDA		100 - 600 mm

### Use

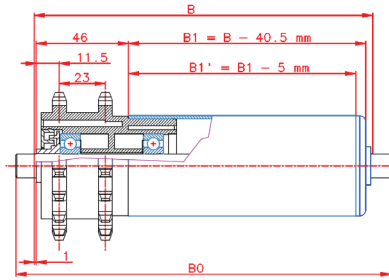
- Both plastic and metal drive final element available. The drive is fixed with plastic compression ring.
- The drive roller MKR 06B1 2 x Z=20; can be made of fixed and driven version
- Roller with steel bearing for gravity systems or for conveyor belts
- Ball bearing ( 6204 2RSC3; 6205 2RSC3; 6306 2RSC3; 6308 2RSC3)  
in a deep drawn surface processed steel housing
- Labyrinth sealing
- Suitable for heavy conveyed items, tube flange is available
- Extraordinarily robust welded design
- Can be used under bad circumstances ( eg. cold storage, agricultural use, mine industry)
- With or without tube coating, Temperature range: 0° - 100°





# TYPE 53-23

D= 50; 60 mm



Bmin = 125 mm

## Tube (D)

	D×s (mm)	Steel	Surface process	Stainless steel	Plastic
	50 × 1,5 mm	O	S	S	-
	60 × 1,5 mm	O	S	S	-
	63 × 3,0 mm	-	-	-	S

## Spindle ( d )

	d ( mm )	Steel	Surface process	R.M. 1.4301	Without spindle
	12 mm	S	S	S	

## Bearing

	Type		Type	
	MS50.;MS60 6202 ZZ C3;		MS50. 6002 2RS C3	
Fmax= 800 N		Fmax= 800 N		

## Shaft end

	Type (S04)		Type (S05)	
	MaleThread		FemaleThread	
	M8; M10; M12; M14		d=10 mm;M6 d=12 mm;M8 d=14 mm;M10	
B0=B+(2× thread)		B0=B - 1 mm		Flat with: 4;5;6;8;10;12 mm B0=(B+2X flat)

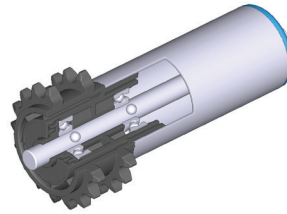
S- Standard; O- Orderable




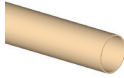





## TYPE 53-23



### Accessories

	Tube Flange		Tube Coating		Conical element
	PP F.50-130		RCS 50×55 mm		Plastic
	PP F.60-130		RCS 60×65 mm		D=50 mm
	Usable for lower force		PU; 85shA ; FDA		100 - 600 mm

### Use

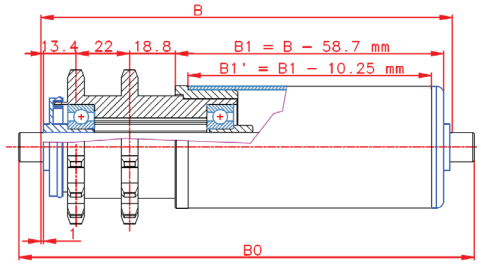
- Both plastic and metal drive final element available. The drive is fixed with plastic compression ring.
- The drive roller MKR 08B1 2 x Z=17; can be made of fixed version
- Roller with steel bearing for gravity systems or for conveyor belts
- Ball bearing ( 6204 2RSC3; 6205 2RSC3; 6306 2RSC3; 6308 2RSC3)  
in a deep drawn surface processed steel housing
- Labyrinth sealing
- Suitable for heavy conveyed items, tube flange is available
- Extraordinarily robust welded design
- Can be used under bad circumstances ( eg. cold storage, agricultural use, mine industry)
- With or without tube coating, Temperature range: 0° - 100°





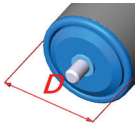
# TYPE 54-23

D= 50; 60 mm



Bmin = 125 mm

## Tube (D)



D×s (mm)	Steel	Surface process	Stainless steel	Plastic
50 × 1,5 mm	O	S	S	-
50 × 2,0 mm	S	S	S	O
50 × 2,8 mm	-	-	-	S
51 × 2,6 mm	S	S	O	-
60 × 1,5 mm	O	S	S	-
63 × 3,0 mm	-	-	-	S

## Spindle ( d )



d ( mm )	Steel	Surface process	R.M. 1.4301	Without spindle
8 mm	S	S	S	
10 mm	S	S	S	
12 mm	S	S	S	
14 mm	S	S	S	
15 mm *	S	S	S	
11SW mm	S	S	S	

## Bearing



Type  
MS50.  
6002 2RS C3

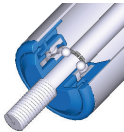
Fmax= 800 N



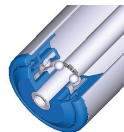
Type  
MS50.;MS60  
6202 ZZ C3

Fmax= 800 N

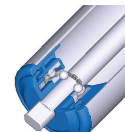
## Shaft end



Type (S04)  
MaleThread  
M8; M10; M12;  
M14  
B0=B+(2×  
thread)



Type (S05)  
FemaleThread  
d=10 mm;M6  
d=12 mm;M8  
d=14 mm;M10  
B0=B - 1 mm



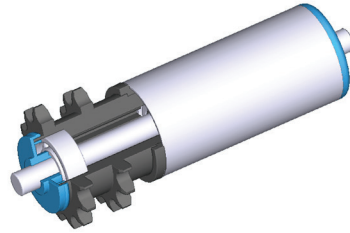
Type ( S06 )  
Milled Flats  
Flat with:  
4;5;6;8;10;12  
mm  
B0=(B+2X flat)

S- Standard; O- Orderable


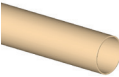





## TYPE 54-23



### Accessories

	Tube Flange		Tube Coating		Conical element
	PP F.50-130		RCS 50×55 mm		Plastic
	PP F.60-130		RCS 60×65 mm		D=50 mm
	Usable for lower force		PU; 85shA ; FDA		100 - 600 mm

### Use

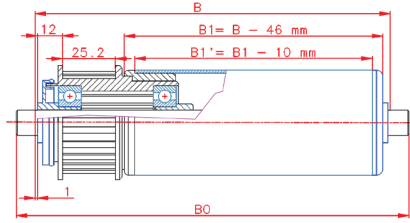
- Both plastic and metal drive final element available. The drive is fixed with plastic compression ring.
- The drive roller MKR 08B1 2 x Z=14 (13); can be made of fixed and friction version
- The roller can be made of metal welded square ring
- Roller with steel bearing for gravity systems or for conveyor belts
- Ball bearing ( 6204 2RSC3; 6205 2RSC3; 6306 2RSC3; 6308 2RSC3)
  - in a deep drawn surface processed steel housing
- Labyrinth sealing
- Suitable for heavy conveyed items, tube flange is available
- Extraordinarily robust welded design
- Can be used under bad circumstances ( eg. cold storage, agricultural use, mine industry)
- With or without tube coating, Temperature range: 0° - 100°





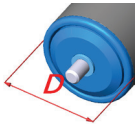
# TYPE 55-23

D= 50; 60 mm



Bmin = 110 mm

## Tube (D)



D×s (mm)	Steel	Surface process	Stainless steel	Plastic
50 × 1,5 mm	O	S	S	-
50 × 2,0 mm	S	S	S	O
50 × 2,8 mm	-	-	-	S
51 × 2,6 mm	S	S	O	-
60 × 1,5 mm	O	S	S	-
63 × 3,0 mm	-	-	-	S

## Spindle ( d )



d ( mm )	Steel	Surface process	R.M. 1.4301	Without spindle
8 mm	S	S	S	
10 mm	S	S	S	
12 mm	S	S	S	
14 mm	S	S	S	
15 mm *	S	S	S	
11SW mm	S	S	S	

## Bearing



Type  
MS50.;MS60  
6202 ZZ C3;

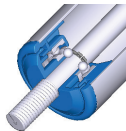
Fmax= 800 N



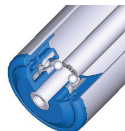
Type  
MS50.  
6002 2RS C3

Fmax= 800 N

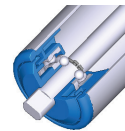
## Shaft end



Type (S04)  
MaleThread  
M8; M10; M12;  
M14  
B0=B+(2×  
thread)



Type (S05)  
FemaleThread  
d=10 mm;M6  
d=12 mm;M8  
d=14 mm;M10  
B0=B - 1 mm



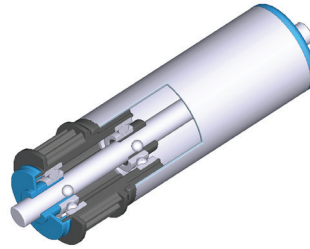
Type ( S06 )  
Milled Flats  
Flat with:  
4;5;6;8;10;12  
mm  
B0=(B+2X flat)

S- Standard; O- Orderable





## TYPE 55-23



### Accessories

	Tube Flange		Tube Coating	
	PP F.50-130		RCS 50×55 mm	
	PP F.60-130		RCS 60×65 mm	
	Usable for lower force		PU; 85shA ; FDA	

### Use

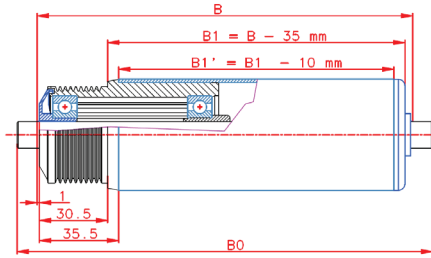
- Both plastic and metal drive final element available. The drive is fixed with plastic compression ring.
- The drive roller MKR 8M Z=20; can be made of fixed and friction version
- Roller with steel bearing for gravity systems or for conveyor belts
- Ball bearing ( 6204 2RSC3; 6205 2RSC3; 6306 2RSC3; 6308 2RSC3)  
in a deep drawn surface processed steel housing
- Labyrinth sealing
- Suitable for heavy conveyed items, tube flange is available
- Extraordinarily robust welded design
- Can be used under bad circumstances ( eg. cold storage, agricultural use, mine industry)
- With or without tube coating, Temperature range: 0° - 100°





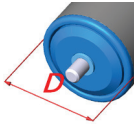
# TYPE 56-23

D= 50; 60 mm



Bmin = 100 mm

## Tube (D)



D×s (mm)	Steel	Surface process	Stainless steel	Plastic
50 × 1,5 mm	O	S	S	-
60 × 1,5 mm	O	S	S	-
63 × 3,0 mm	-	-	-	S

## Spindle ( d )



d ( mm )	Steel	Surface process	R.M. 1.4301	Without spindle
8 mm	S	S	S	
10 mm	S	S	S	
12 mm	S	S	S	
14 mm	S	S	S	
15 mm *	S	S	S	
11SW mm	S	S	S	

## Bearing

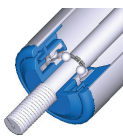


Type
MS50.;MS60 6202 ZZ C3;
Fmax= 800 N

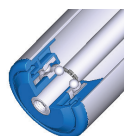


Type
MS50. 6002 2RS C3
Fmax= 800 N

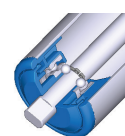
## Shaft end



Type (S04)
MaleThread
M8; M10; M12; M14
B0=B+(2× thread)



Type (S05)
FemaleThread
d=10 mm;M6 d=12 mm;M8 d=14 mm;M10
B0=B - 1 mm



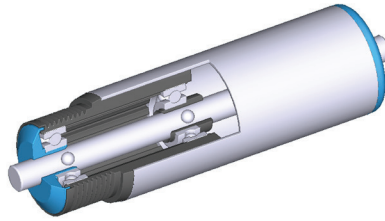
Type ( S06 )
Milled Flats
Flat with: 4;5;6;8;10;12* mm
B0=(B+2X flat)

S- Standard; O- Orderable





## TYPE 56-23



### Accessories

	Tube Flange		Tube Coating	
	PP F.50-130		RCS 50x55 mm	
	PP F.60-130			
	Usable for lower force		PU; 85shA ; FDA	

### Use

- Both plastic and metal drive final element available. The drive is fixed with plastic compression ring.
- The drive roller MKR PJ Z=9; can be made of fixed and friction version
- Roller with steel bearing for gravity systems or for conveyor belts
- Ball bearing ( 6204 2RSC3; 6205 2RSC3; 6306 2RSC3; 6308 2RSC3)  
in a deep drawn surface processed steel housing
- Labyrinth sealing
- Suitable for heavy conveyed items, tube flange is available
- Extraordinarily robust welded design
- Can be used under bad circumstances ( eg. cold storage, agricultural use, mine industry)
- With or without tube coating, Temperature range: 0° - 100°









## HEAVY-DUTY DRIVE CONVEYOR ROLLER

(steel house)

**TYPE 6X**



# STARKLINE

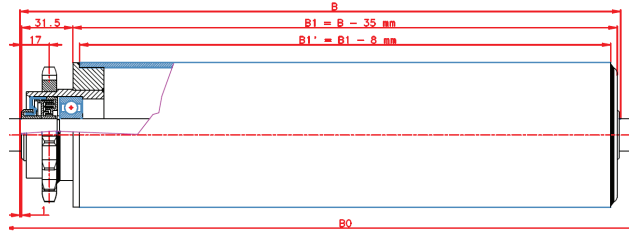
73





# TYPE 61-43

D= 89; 108 mm



Bmin = 125 mm

## Tube (D)

	D×s (mm)	Steel	Surface process	Stainless steel	Plastic
	89 × 3,0 mm	S	S	S	N
	108 × 3,2 mm	S	S	S	N

## Spindle ( d )

	d ( mm )	Steel	Surface process	R.M. 1.4301	Without spindle
	17 mm	S	S	S	
	20 mm	S	S	S	
	25 mm *	S	S	S	

## Bearing

	Type		Type	Fmax= 800 N
	FH 89;FH108 6204 ZZ C3;		FH 89 6303 ZZ C3	
	Fmax= 800 N		Fmax= 800 N	

## Shaft end

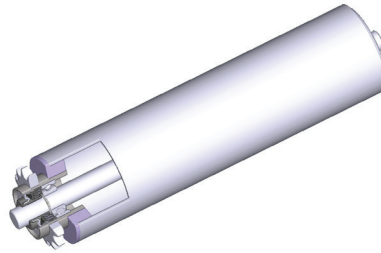
	Type (S04)		Type (S05)		Type ( S06 )
	MaleThread		FemaleThread		Milled Flats
	M10; M12; M14		d=17 m; M8;M10 d=20 mm; M10;M12		Flat with: 14;15;16; 17*;18* 6;8;10;12 mm
	B0=B+(2× thread)		B0=B - 1 mm		B0=(B+2X flat)

S- Standard; O- Orderable





## TYPE 61-43



### Accessories

	Tube Flange		Tube Coating	
	PP F.89-150		RCS 89×94 mm	
	PP F.108-150			
	Usable for lower force		PU; 85shA ; FDA	

### Use

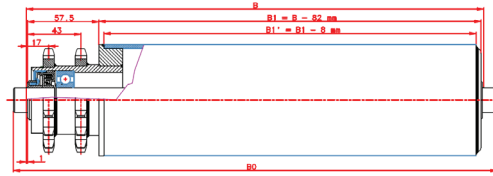
- The drive final element can be made of metal welded square ring
- The drive roller FKR 10B1 2x Z=15; can be made of fixed version
- Optional sprockets: 08B1 Z=17; 10B1 Z=16; 12B1 Z=13 Z=14
- Roller with steel bearing for driven systems or for conveyor belts
- Ball bearing ( 6204 2RSC3; 6205 2RSC3; 6303 )  
in a deep drawn surface processed steel housing
- Labyrinth sealing
- Suitable for heavy conveyed items, tube flange is available
- Extraordinarily robust welded design
- Can be used under bad circumstances ( eg. cold storage, agricultural use, mine industry)
- With or without tube coating, Temperature range: 0° - 100°





# TYPE 62-43

D= 89; 108 mm



Bmin = 135 mm

## Tube (D)

	D×s (mm)	Steel	Surface process	Stainless steel	Plastic
	89 × 3,0 mm	S	S	S	N
	108 × 3,2 mm	S	S	S	N

## Spindle ( d )

	d ( mm )	Steel	Surface process	R.M. 1.4301	Without spindle
	17 mm	S	S	S	
	20 mm	S	S	S	
	25 mm *	S	S	S	

## Bearing

	Type		Type		Type
	FH108 6305		FH 89 6303 ZZ C3		FH 89;FH108 6204 ZZ C3;
Fmax=1500		Fmax= 2000 N		Fmax= 2000 N	

## Shaft end

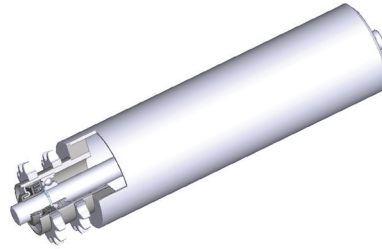
	Type (S04)		Type (S05)		Type ( S06 )
	MaleThread		FemaleThread		Milled Flats
	M10; M12; M14		d=17 m; M8;M10 d=20 mm; M10;M12		Flat with: 14;15;16; 17*;18* 6;8;10;12 mm
B0=B+(2× thread)		B0=B - 1 mm		B0=(B+2X flat)	

S- Standard; O- Orderable





## TYPE 62-43



### Accessories

	Tube Flange		Tube Coating	
	PP F.89-150		RCS 89×94 mm	
	PP F.108-150			
	Usable for lower force		PU; 85shA ; FDA	

### Use

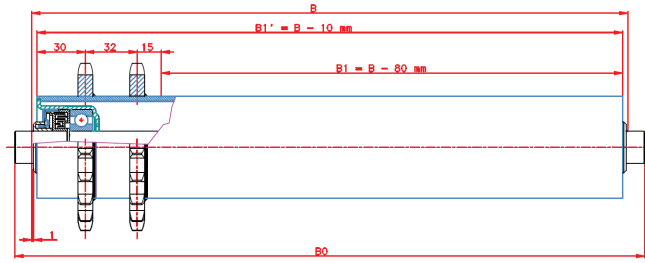
- The drive final element can be made of metal welded square ring
- The drive roller FKR 10B1 2x Z=15; can be made of fixed version
- Optional sprockets: 08B1 Z=17; 10B1 Z=16; 12B1 Z=13 Z=14
- Ball bearing ( 6204 2RSC3; 6205 2RSC3; 6303 )  
in a deep drawn surface processed steel housing
- Labyrinth sealing
- Suitable for heavy conveyed items, tube flange is available (palet)
- Extraordinarily robust welded design
- Can be used under bad circumstances
- With or without tube coating, Temperature range: 0° - 100°





# TYPE 63-43

D= 63; 89 mm



Bmin = 125 mm

## Tube (D)

	D×s (mm)	Steel	Surface process	Stainless steel	Plastic
	63,5 × 2,9 mm	S	S	S	N

## Spindle ( d )

	d ( mm )	Steel	Surface process	R.M. 1.4301	Without spindle
	17 mm	S	S	S	
	20 mm	S	S	S	

## Bearing

	Type		Type	
	FH 63 6303 ZZ C3		FH 63 6204 ZZ C3;	
Fmax= 800 N		Fmax= 800 N		

## Shaft end

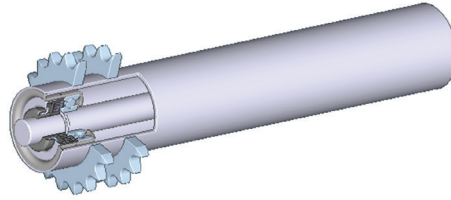
	Type (S04)		Type (S05)		Type ( S06 )
	MaleThread		FemaleThread		Milled Flats
	M10; M12; M14		d=17 m; M8;M10 d=20 mm; M10;M12		Flat with: 14;15;16; 17*;18* 6;8;10;12 mm
B0=B+(2× thread)		B0=B - 1 mm		B0=(B+2X flat)	

S- Standard; O- Orderable





## TYPE 63-43



### Accessories



Tube Flange
PP F.89-150
PP F.108-150
Usable for lower force

### Use

- Drive final element cylindrical welded metal version is.
- The drive roller FKR 10B1 2x Z=19; can be made of fixed version
- Optional sprockets: 10 B1 Z=20
- Roller with steel bearing for gravity systems or for conveyor belts
- Ball bearing ( 6204 2RSC3; 6205 2RSC3; 6303 )  
in a deep drawn surface processed steel housing
- Labyrinth sealing
- Suitable for heavy conveyed items, tube flange is available
- Extraordinarily robust welded design
- Can be used under bad circumstances
- With or without tube coating, Temperature range: 0° - 100°





The **STARKLINE** rollers are manufactured by Moltech AH Ltd.

Contact us:

H-6758 Röske, II. körzet 107.

Tel.: +36 62 57 30 57

Fax: +36 62 57 30 59

Mobil: +36 20 333 1393

Web: [www.moltech.hu](http://www.moltech.hu)

Tibor Varga

product manager

Tel.: +36 20 9803675

e-mail: [varga.tibor@moltech.hu](mailto:varga.tibor@moltech.hu)

**SL**

